

# PADS Logic

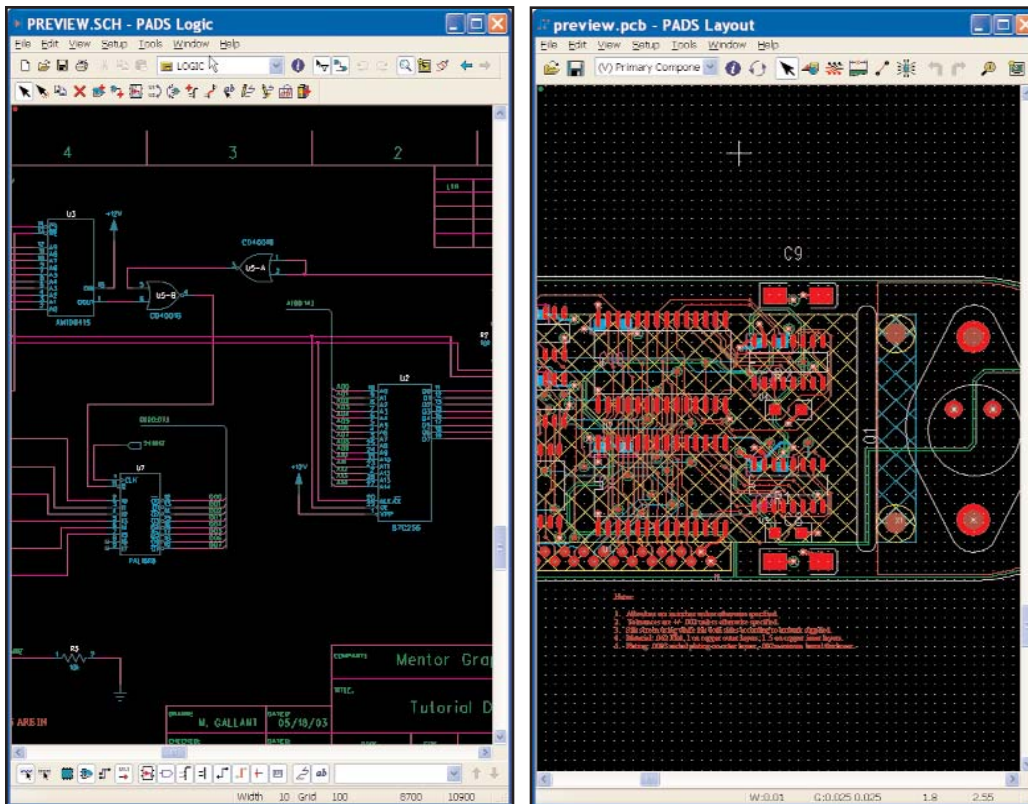


Figure 1: PADS Logic provides a user friendly front end for your PADS Layout design flow.

## Become productive quickly and stay efficient with schematic capture that integrates tightly with PADS Layout

PADS® Logic (formerly known as PowerLogic) is an easy-to-use schematic capture program that is well integrated with PADS Layout so you can come up to speed quickly and remain productive. It is a straightforward, effective front-end environment for PADS Layout. This user-friendly desktop solution offers instant access to every sheet in your design and rapid navigational aides. New parts are easily created in the integrated part editor. The integration between PADS Logic and PADS Layout is evident with high quality, rapid engineering change orders (ECOs) between schematic and layout - forward and backward.

### Major product features

- Look and feel is similar to PADS Layout (formerly known as PowerPCB)
- Cross probing and detailed forward and back annotation with PADS Layout
- Detailed attribute and design rule definition and control
- Wizards for custom report generation
- Includes OLE automation for seamless integration with other EDA products
- New option! Intelligent PDF generation
- New option! SPICE netlist support

---

## High quality capabilities provide high quality schematics

PADS Logic has many quality capabilities to ensure that your design entry process is rapid and smooth. For example, PADS Logic automatically numbers pins and gates, and links signal names across the entire schematic. Integrated libraries provide searching mechanisms, viewing of the PCB footprint prior to placing your part on the schematic, floating connections that allow you to organize your design the way you want, connect by abutment to add parts and connections quickly, and undo/redo means you can enter designs with accuracy and efficiency.

PADS Logic captures your schematic in a single file so that you can easily work on it anywhere. Newly enhanced custom title blocks allow your design to easily follow company standards, and intelligent data fields provide auto-update capability based on current date, time or variables you set. New True type font support enhances the readability of your designs both on the screen and in print-outs, while adding support for international characters.

## Part Attributes and Net Rules provide accurate layout

For accurate design representation, you can define part attributes in PADS Logic and pass them along throughout your design process. PADS Logic also has automatic electrical rule checking with integrated ECO functionality which ensures that ECOs are automatically entered in the logical and physical representations of your design - whether they were entered in the schematic or in layout.

PADS Logic also provides design rule entry for nets so that all of your design information can be captured in one place - the schematic. You then have the choice whether to transition these rules to layout or not. If they are transitioned to layout they are monitored on-line with PADS Layout design rule checking to ensure that they are accurately enforced, helping to ensure a quality layout and smooth transition to manufacturing. Or, if you choose to

enter your design rules in PADS Layout, they can be back annotated to PADS Logic.

## PADS Logic provides rapid and easy-to-use schematic capture for PADS Layout

PADS Logic combines powerful schematic capture functionality with beneficial productivity-enhancing features to ensure quick definition of your schematic and efficient integration with your PADS Layout physical design capabilities.

## Additional capabilities

You can enhance your PADS Logic productivity with two optional products - PADS Logic PDF and PADS SPICEnet. PADS Logic PDF allows you to freely share intelligent PDFs - that is PDFs that include part attribute information and allow net traceability through the PDF file - even hierarchical files. PADS SPICEnet provides a connection between PADS Logic and standard SPICE programs so that you can easily add simulation to your PADS Logic design flow.

## Visit our website at [www.mentor.com/pads](http://www.mentor.com/pads)

Copyright © 2004 Mentor Graphics Corporation. All rights reserved. Mentor Graphics, PADS, and PowerPCB are registered trademarks and PADS Layout and PADS Logic are trademarks of Mentor Graphics Corporation. All other trademarks mentioned in this document are trademarks of their respective owners.

---

**Corporate Headquarters**  
Mentor Graphics Corporation  
8005 SW Boeckman Road  
Wilsonville, OR 97070-7777  
Phone: 503.685.7000  
Fax: 503.685.1204

**Systems Design Division**  
Mentor Graphics Corporation  
1811 Pike Road  
Longmont, CO 80501  
Phone: 720.494.1000  
Sales: 888.482.3322  
Email: [pads\\_info@mentor.com](mailto:pads_info@mentor.com)

**Mentor  
Graphics**



Printed on Recycled Paper

11-04-JC

1022750-w