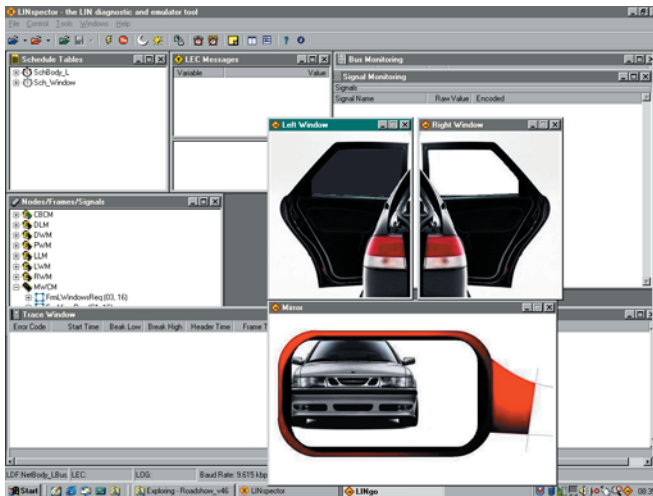


LIN Spector™ Volcano Verification Tool

Vehicle Network Design

D A T A S H E E T



LIN Spector screen shot

Volcano LIN Spector

LIN Spector is a highly flexible analysis and emulation tool used for the testing and validation of LIN communication systems. The tool is divided into two components: an external hardware portion and a PC-based software portion. LIN Spector is available in a basic functionality package or with advanced add-ons to enhance the tool's capabilities.

Basic Emulation Package

The PC software operates in MS Windows environment and provides a number of features. Starting with LIN Description File (LDF) import, LIN Spector software allows for monitoring and display of all network signal data. Advanced analysis is possible with logical name and scaled physical value views. Full emulation of one or many nodes (master and/or slave) is possible via information from the LDF. Communication logging and replay is possible, including the ability to start and stop a log via logic-based triggers. LIN Spector is also able to detect several protocol errors and to aid in troubleshooting by providing detailed protocol timing information. From the PC software, the user is able to switch between schedule tables and modify signal values of all emulated nodes on the fly.

LIN Go

Included in all packages of LIN Spector, LIN Go allows for the creation of sophisticated GUI panels. Such GUI panels are capable of interfacing with LIN network data for display and control. The LIN Spector comes with an easy-to-use editor that allows the user to add pictures and predefined objects such as image lists and gauges to the panels.

Major product features

- Full master and slave emulation capability with variable bus termination resistance
- Accurate timing measurements with 10µs resolution
- LIN Go editor to connect signals to graphical objects in the PC environment
- LIN 2.0 compliant
- Easy saving of trace data into log files. Log files can be “replayed” offline in the LIN Spector PC software

Real-time control:

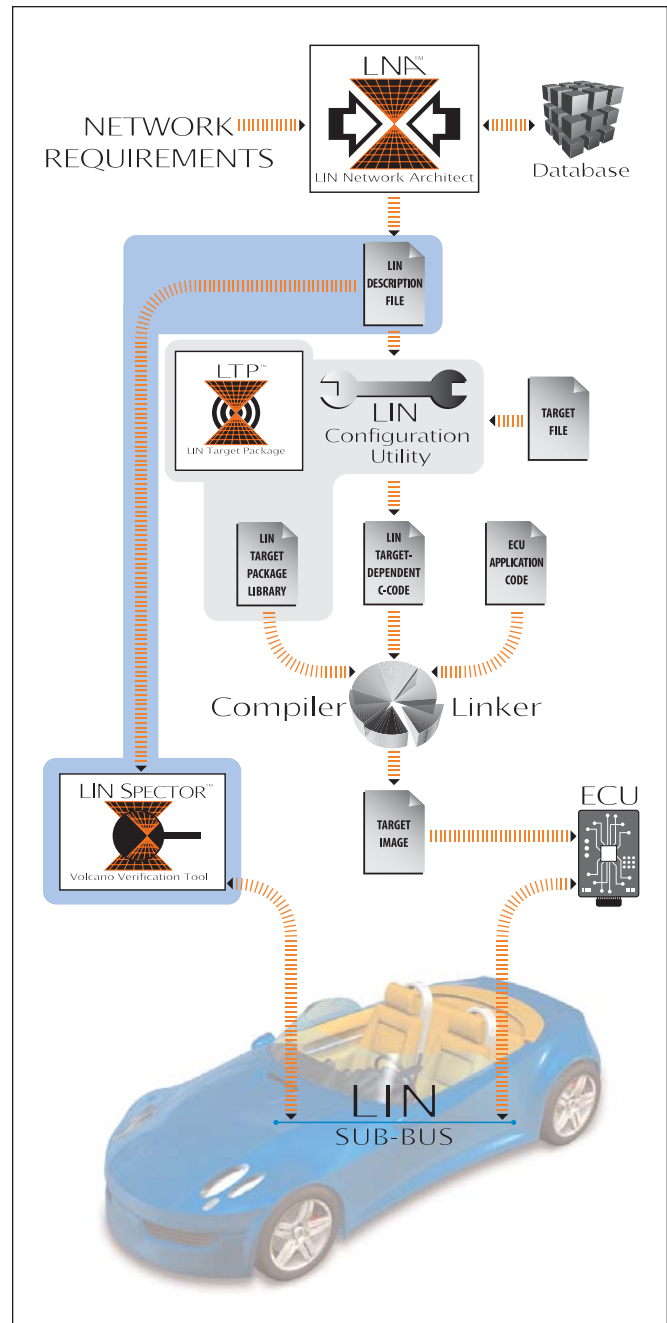
- Easy-to-use script editor
- All script functions realized in HW application. Guarantees real-time behavior
- Predefined functions for controlling protocol properties and error emulation
- Digital I/O for external triggering or input

Technical Specifications:

- Supports all LIN revisions (1.0 thru 2.0)
- MS Windows 9x/NT/2000/XP compatible
- 32-bit MCU-based HW
- Available as 12V and 24V versions

Advanced Emulation Package

The advanced emulation package adds the capability for the user to control the LIN Spector's advanced emulation features through a C-like programming language, LEC (LIN Emulation Control). This gives the user the ability to change emulated signals, switch schedule tables and introduce protocol-level errors all in real time. LEC scripts are compiled in the PC software environment and downloaded into the LIN Spector hardware where they run as an application software guaranteeing proper real-time behavior.



Complete LIN solution provided by Mentor Graphics

Visit our website at www.mentor.com/automotive

Copyright © 2006 Mentor Graphics Corporation. Mentor products and processes are registered trademarks of Mentor Graphics Corporation. All other trademarks mentioned in this document are trademarks of their respective owners.

Corporate Headquarters
Mentor Graphics Corporation
 8005 SW Boeckman Road
 Wilsonville, OR 97070-7777
 Phone: 503.685.7000
 Fax: 503.685.1204

Sales and Product Information
 Phone: 800.547.3000

Silicon Valley
Mentor Graphics Corporation
 1001 Ridder Park Drive
 San Jose, California 95131 USA
 Phone: 408.436.1500
 Fax: 408.436.1501

North American Support Center
 Phone: 800.547.4303

Europe
Mentor Graphics
Deutschland GmbH
 Arnulfstrasse 201
 80634 Munich
 Germany
 Phone: +49.89.57096.0
 Fax: +49.89.57096.400

Pacific Rim
Mentor Graphics (Taiwan)
 Room 1001, 10F
 International Trade Building
 No. 333, Section 1, Keelung Road
 Taipei, Taiwan, ROC
 Phone: 886.2.87252000
 Fax: 886.2.27576027

Japan
Mentor Graphics Japan Co., Ltd.
 Gotenyama Hills
 7-35, Kita-Shinagawa 4-chome
 Shinagawa-Ku, Tokyo 140
 Japan
 Phone: 81.3.5488.3033
 Fax: 81.3.5488.3004

Mentor Graphics



Printed on Recycled Paper

03-2006

1024570